

PITTSBURGH SOCIETY OF ARTISTS EXHIBITION NEWS

JULY 2008



ME, MYSELF & I
Self Portrait Exhibition
Lynn Deppen (top)
Tish Corbett



ME, MYSELF & I
Self Portrait Exhibition
Sandra Wolf

INSIDE THIS ISSUE:

Exhibition 2009 2

Volunteers Needed 3

Monthly Email Blasts 3

Attachment 2008

Progressive Annual

ME, MYSELF & I

Pittsburgh Society of Artists' Self Portrait Exhibition opened at the Third

Street Gallery in Carnegie on June 6th and ran thru June 29th. Phil Salvato's jazz trio set the tone for the opening reception which was well attended by artists and patrons. PSA members exhibiting included:

Carol Volz Begley
Ellen Bjerklie Hanna
Lila Hirsch Brody
Nancy Bush
Tish Corbett
Dottie de Groat
Lynn Deppen
Amy Dimichele
John Dorinsky

Betty Elias
Marvin C Fields
Dorothy Forman
Patricia Fragola
Ron Gallagher



Sheila Golding
James Guentner
Claire Hardy
Joseph Holtz
Nell Kaley
Paula Garrick Klein
Deborah A. Kollar
George Kollar

Anne Kuhn
Yelena Kukhareenko
Marianne Marino
Suzanne L. Martin
Mary B. Mason
Garry Merola
Connie Moore
Marina Mozhayeva
Helen Naimark
Jan Pociernicki
Martha E. Ressler
Jay Ressler
James Rettinger
Ruth Richardson
Susan Sparks
Christine Swann
Sandra Ward
David Watts
Diane White
Sharon Wilcox
Helen Worsing
Jennifer Yorkgitis
Kathleen Zimbicki
Kudos to all for creating a wonderful exhibition!

www.pittsburghsocietyofartists.org

Pittsburgh Society of Artists is pleased to announce a new, updated web presence. Our new PSA web site features a complete members list with links to individual member web pages or emails, meeting and exhibition schedules, and exhibition entry forms on line. You'll see articles detailing upcoming shows and events as well as an-

nouncements and newsletters. In an effort to further promote our members and their art, we have included an online Gallery. The Gallery will feature exhibits from PSA Shows and will be a valuable tool to help us promote the PSA and its members. Currently in the gallery you can see highlights of our recent Me, Myself & I Exhibition.

There are also some fun educational links that might be of interest to our members. A very special thank you to Garry Merola for graciously donating his time and talents to produce our website, it is truly an incredible marketing tool for our organization. PSA is definitely on the move!

Annual 2008

Pittsburgh Society of Artists Presents 2008 Progressive Annual Exhibition.

With nearly 300 members, PSA is on the move! This exhibition will provided our ever growing membership with TWICE the opportunities affiliated with an annual exhibition. We are delighted to partner with the Fein Art Gallery on Pittsburgh's Historic North Side and the Elan Gallery in Sewickley along with Juror, Graham Shearing to present this innovative exhibition. The juror will select artwork for both galleries at the October 5th screening at the Pittsburgh Center for the Arts. There will be two opening receptions and award ceremonies, one at each Gallery. YOUR support and participation will ensure the success of our exhibitions along with securing our place among Pittsburgh's leading art organizations.

SEE THE ATTACHED PROSPECTUS FOR ALL THE DETAILS

October 24- November 15

FEIN ART GALLERY

519 East Ohio Street
Pittsburgh, PA 15212

**Opening Reception & Award
Ceremony October 24**

November 1 - 29

ELAN GALLERY

427 Broad Street
Sewickley, PA 15143

**Opening Reception & Award
Ceremony November 1**



ME, MYSELF & I
Self Portrait Exhibition
Kathleen Zimbicki

*"As long as there has
been art, there has
been the artist as the
subject."*



ME, MYSELF & I
Self Portrait Exhibition
Dorothy Forman

2009 PITTSBURGH SOCIETY OF ARTISTS EXHIBITON SCHEDULE

First Quarter

SMALL WORKS

The Framery
4735 Butler Street - Lawrenceville
March 6 thru March 27

Second Quarter

SALIGIA - A Seven Deadly Sins Exhibition

Pittsburgh Center for the Arts
May 1st- August (tentative)

Third Quarter

ANNUAL MEMBER EXHIBITION

To Be Announced

Fourth Quarter

WHEN NIGHT FALLS – A Nocturnal Exhibition

Pittsburgh Center for the Arts
Nov. 20th- Jan. 2010 (tentative)

Something to think about for 2009

SALIGIA

A Seven Deadly Sins Exhibition

Superbia, Avaritia, Luxuria, Invisia, Gula, Ira and Accidia
The first letter of these Medieval Latin words form
SALIGIA

Translation - Lust, Gluttony, Greed, Sloth, Wrath, Envy and Pride - To commit a deadly sin.

The seven deadly sins have been a source of inspiration to art and artists since the beginning of time. We see evidence of their presence daily in Western Society.



ME, MYSELF & I
Self Portrait
Exhibition
Christine Swann

Some of these sins are even "celebrated" as virtues in modern society. This exhibit challenges artists for their interpretation of one, several, or all of these sins via the media of their choice. Artists are required to identify which sin is being portrayed and include a statement about their interpretation as part of the entry. Open to all PCA Guild Members, local and regional artists over the age of eighteen. Juror will award seven prizes.

When Night Falls A Nocturnal Exhibition

When night falls the outside world is cast with an unusual allure, evoking sensations that cease to exist with luminous sunlight. Familiar surroundings become less defined and opened to ambiguous impressions of solitude, comfort and the curiosity of the unknown. Contrarily and perhaps simultaneously, anxiety stems from the invisibility of nightfall, the mystery and consternation

posed by the incognizance of what lurks amid the dimming backdrop.

From representations of astrological amusements and urban environments to creatures of the night, fairly tame to the risqué to the seedy; *When Night Falls* encompasses the world between dusk and dawn.

This exhibit challenges artists for their interpretation of nightlife, creating art in a new and different light via the media of their choice. Open to all PCA Guild members, local, regional, and national artists over the age of eighteen.

Prospectus for these shows will be made available in 2009 when we have confirmation on the dates.



ME, MYSELF & I
Self Portrait Exhibition
Amy DiMichele

"As perhaps man's most intimate and pure display of consciousness, self-portraiture reveals the artist as he sees himself, as he wants to be seen."

Volunteers Needed

PSA Exhibitions is always in need of volunteers. Your support and assistance with the marketing, screening, drop off, pick up and the opening receptions & awards processes will ensure the success

of our exhibitions.

PLEASE GET INVOLVED.

To volunteer please contact Ron Gallagher,
info@ronniegoriginals.com or David Watts,
tinsel_garland@yahoo.com



ME, MYSELF & I
Self Portrait Exhibition
Diane White

what they 're saying...

<http://artinpittsburgh.blogspot.com>

posted by PSA Member Alan Byrne

Self-portraits present a special challenge to artists: for, if as they say, the eyes are the window of the soul, then the artist must gaze into these portals and oft time reveal much more than the superficial likeness. This has been the case of the truly great artists who have answered this challenge—Rembrandt, van Gogh and Frida Kahlo have given us a glimpse of their joys and sorrows exposing their very character therein. It is, perhaps, why Picasso painted so few self-portraits. Often embedded in the artist's portrait is the artist's statement—the philosophy that permeates his or her career. The color, the form, the medium, and the style take on greater importance when they are applied to the likeness of the

creator. The dominate style of the Pittsburgh Society of Artists is realism and the genre is well-suited to this show at the Third Street Gallery. Artists who hold a mirror to nature are a natural choice to hold a mirror to themselves. Even within the narrow range of representationalism, the artists have chosen many paths. Some works depict the artist at work or with the tools of their trade. Some use photographs to show us how they were; such are the case in Sandra Ward's Photo-realistic "Then and Now" and the masterly-rendered still life, "Artist's Reflections" by Diane White. Some artists place themselves in a montage of their interests. Ruth Richardson does this beautifully in water-color while Martha E. Ressler is "Unabashedly Me" in an

assemblage collage. Sometimes artists go beyond the artist's world to include universal truths. James Rettinger's sculpture, "You Look Like You Father" reminds us that we all eventually become our parents. And sometimes the work becomes the very embodiment of the artist. Lila Hirsch Brody's exuberant construction is Lila Hirsch Brody. But the piece that most impressed me was Amy Dimichele's "Self -Portrait." Simple, yet sophisticated, this delicate painting brought to mind the work of Tamara de Lempicka (although Ms Dimichele is more Cubist than Art Deco.) The artist's intense concentration represents and effort not to simply get it right, but to get it me.



ME, MYSELF & I
Self Portrait Exhibition
James Rettinger

Kathleen Zimbicki
PSA Member, Former Board President, Gallery Owner,
Curator, Art Enthusiast!

When I arrived at Third Street Gallery for the opening I asked, who won the prizes?

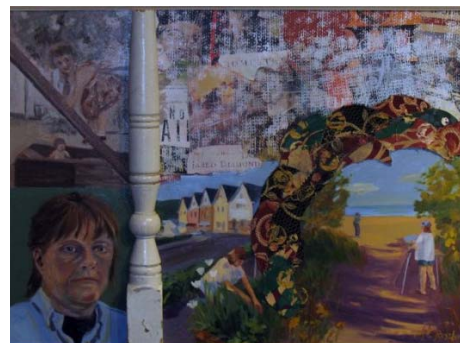
When I was told there were no prizes in all humility I pretended I was the award giver –

Best of Show - Tish Corbet with her short red hair, "Gossip" For Creativity – Ron Gallagher's fingerprint, "Human Bar Code," Nancy Bush's clever mirror, "How I See Myself," Sandra Ward's "Now and Then," Marianne Marino's childhood memories as only she can do, "Deep In My Heart."

Who is not drawn to color and humor – Amy DiMichele, Jan Pociernicki's green hair and Lila Hirsch Brody's work? Great coffee photo by Betty Elias.

And to the Most "look likes" – Carol Begley, "Myself" and Jim Rettinger, "You Look Like Your Father"

ME, MYSELF & I
Self Portrait Exhibition
Lila Hirsch Brody



ME, MYSELF & I
Self Portrait Exhibition
Martha E. Ressler
Ruth Richardson
(right)

