

WHEN NIGHT FALLS

Running through January 24, 2010, PSA's exhibition "When Night Falls" at the Pittsburgh Center for the Arts features 17 works by Pittsburgh artists showcased museum style.

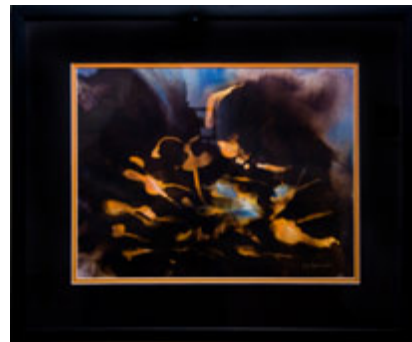
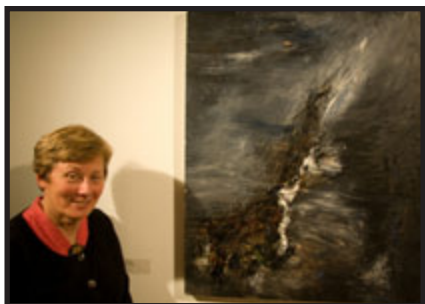
On December 10th, PSA board members Gloria Hersch and Jay Ressler spoke about the show and their works to a few brave souls who ventured out in the harsh winter weather. Jay discussed his double-exposure photograph "The Night Gerald Turned 60," which received a juror's award. A zoom blurred image of a birthday party is super-imposed over the image of an 1815 stone farmhouse at night, bringing the activities inside outside. Hersch discussed the technique of ink pouring to produce masterful abstracts as shown in her work "Into the Light."

Three prizes were awarded at the show. In addition to Jay Ressler, Patricia Kelly received a juror's award for

"Allegheny Night", and Suzanne Colvin for "Dark Corners." The exhibition was open to submissions from both members and non-members of PSA.

The prospectus read: "When night falls, the outside world is cast with an unusual allure, evoking sensations that cease to exist with luminous sunlight. Familiar surroundings become less defined and opened to ambiguous impressions of solitude, comfort and the curiosity of the unknown. Contrarily and perhaps simultaneously, anxiety stems from the invisibility of nightfall, the mystery and consternation posed by the incognizance of what lurks amid the dimming backdrop. When Night Falls encompasses the world between dusk and dawn."

The Juror, Michael Olijnyk, is Curator of Exhibitions at the Mattress Factory. Over one hundred pieces were submitted by sixty artists.



PSA EXHIBITIONS FOR 2010

BY EVA TROUT, Exhibitions Chair

Artists of all media will be offered exciting opportunities to exhibit their art in a variety of venues around Pittsburgh. The first show of the season will be "Small Art Works" held at Borelli-Edwards Gallery from April 10th to April 24th.

In three shows members face the challenge of juring in, the December Members' Show celebrates PSA members' art by enabling each member to display their work.

PSA will feature the exhibit, "Urban Dreams" at Fein Art Gallery from June 4th to July 9th. This exhibit calls

CONTINUED, page 2

Patricia Kelly
"Allegheny Night"
(Oil Painting)

Jay Ressler
"The Night Gerald Turned 60"
(Photograph)

Gloria Goldsmith Hersch
"Into the Night"
(Ink Pouring)

Suzanne Colvin
"Dark Corner" (Oil on Canvas)



ISSUE HIGHLIGHTS

- October Member Exhibition
- 2010 Exhibition Schedule
- New Members and Officers

2010 EXHIBITIONS cont'd

upon artists to express the hopes and fears of globalization as it relates to our own urban environments.

Society of Contemporary Craft will host the PSA exhibit, "Shelter" from October 1st to December 5th at their satellite gallery, One Mellon Center. The exhibit will encompass work which exemplifies both the emotional and psychological need for shelter.

The year will finish out with the Annual Members Exhibition held at the Art Institute of Pittsburgh from December 6, 2010 to January 2011. While the other shows present members with the challenge of juring in, this show celebrates PSA members' art by enabling each member to display their work.

Early in 2011 the PSA exhibition, "Halo" is being planned for the Pittsburgh Center for the Arts. It will be a provocative, illuminating show exhibiting artists interpretations of light.

Begin planning now for submitting your best work to these dynamic exhibitions. Stay tuned for upcoming details and award opportunities.

Art washes away from the soul the dust of everyday life.

~ Pablo Picasso

AAP WANTS TO KNOW:

"CAN PSA COME OUT TO INTERPLAY"

PSA members who are current in their dues (and members of any other PCA Guild) are invited to participate in the forthcoming AAP exhibit "Interplay."

As part of the Associated Artists of Pittsburgh 2010 Centennial Year celebration, AAP will honor its connection with Pittsburgh Filmmakers/Pittsburgh Center for the Arts and its affiliated guild artists with the exhibition. Interplay is defined as mutual action, influence and interaction. It implies a reciprocal action and reaction of opposing forces. Some examples are the interplay between environment and genetics; painting and sculpture; religion and politics; art and science. The concept of "Interplay" can also embrace the cooperative and creative action and reaction between two or more artists involved in collaboration.

The exhibition will be shown at PCA June 25 – August 22, 2010. As with all PCA exhibitions, submissions will be digital. Digital entries are due at the AAP office April 9th. For details you can get the prospectus at http://www.aapgh.org/main/interplay_prospectus2a.pdf. Or contact AAP exhibit chair David Watts at: tinsel_garland@yahoo.com.

2009 MEMBER EXHIBITION

The 2009 Annual Members Exhibition opened Saturday, October 3rd at Borelli Edwards Gallery on Butler Street in Pittsburgh. The exhibit was juried by Joy Borelli and featured a variety of exceptional works from many PSA participants. The show ran through October 17th.

Congratulations to the three prize-winners:

JOSEPH HOLTZ ¹

"Best Friends", Enamel on Glass

RHODA TAYLOR ²

"Diatom Dreams", Rusted Fabric

RON KORCZYNSKI ³

"Patterned Sugar, Creamer, Tray", Ceramic



2009 MEMBER EXHIBITION cont'd

Congratulations to the six honorable mention recipients:

MARY JACKSON ¹

"Nocturne", Oil Painting

HOLLY PULTZ ²

"Lemons and Kumquat", Watercolor

TRISH ORCHARD ³

"Sunday in New York", Oil Painting

JOE WINKLER ⁴

"Point of Impact", Acrylic

SHEILA R. GOLDING ⁵

"Orb Series #8", Pottery

PETER SANDSTROM ⁶

"Blessing of the Fleet", Oil Painting



WELCOME NEW MEMBERS

Seventeen new artists were accepted at the October New Member Screening. Welcome and Congratulations! We look forward to meeting you and seeing your work at upcoming events.

JANELLE COGAN

Oil Painting, Charcoal, Drawing

RONALD P. COLEMAN

Assemblage, Sculpture, Glass

DAVID CRINER

Acrylic Painting

DONNA ERCOLE-BASH

Gold and Silver

GERRY FLORIDA

Jewelry, Mixed Media

JILL LENA FORD

Mixed Media, Oil Painting

RICHARD HILL

Drawing, Acrylic Painting

LISA JAKAB

Oil Painting

MAURA KOEHLER KEENEY

Oil Painting

FRANCES MARZE

Watercolor, Pastel,
Acrylic Painting

JOHN PATRICK

Digital Painting

KENNY ROMANO

Ceramics, Print Making,
Drawing, Photography

CAROL SKINGER

Oil Painting

JIM STUDENY

Acrylic Painting

RANDOLF WIDMER

Assemblage

SUZANNE WIDMER

Fiber, Glass, Mixed Media,
Assemblage

SHELLEY WILLIAMS

Collage, Assemblage



ELECTED OFFICERS FOR 2010-2011

Vice President: Kathy Sickels

Publicity Chairperson: Suzie Sparks

Recording Secretary: Ruthanne Bauerle

Corresponding Secretary: Jay Ressler

Treasurer: Marty Ressler

Membership Secretary: Jay Ressler

Exhibition Chairperson 2010: Eva Trout

Exhibition Chairperson 2011: Suzie Sparks

Board Members-At-Large: Holly Pultz, Sheila Golding, Gloria Goldsmith Hersch, Alice Lieb & Peter Sandstrom

Nominations Committee: Lynn Deppen, Marty Ressler, Peter Sandstrom, Sheila Golding, and Holly Pultz

Newsletter Volunteer: Jill Ford

PSA still seeks a President, volunteers for exhibitions, treasury, web site, and newsletter committees. Please contact Kathy Sickels at phiris@aol.com if interested. Please also submit articles and photos for consideration in the upcoming newsletter to Jay Ressler at jayressler@pittsburghsocietyofartists.org by April 1st.

Special thanks to Emily Ford Marko for her assistance in re-designing the newsletter.

PITTSBURGH SOCIETY OF ARTISTS

Pittsburgh Center for the Arts

6300 Fifth Ave,

Pittsburgh, PA. 15232

www.pittsburghsocietyofartists.org

psa@pittsburghsocietyofartists.org

2010 NEW MEMBER SCREENINGS

Dates: April 11 & October 24

Drop Off: 12:15 PM to 1:00PM

Pick Up: 3PM to 4PM

MEMBERSHIP MEETING SCHEDULE

April 25, 2010 1PM

Program and demonstration

by Julie Bernstein Engelmann

November 14, 2010 1PM

Tentative Program: Roger Costello

All held at Simmons Hall, Pittsburgh Center for the Arts.

2010 DUES MUST BE PAID BY JANUARY 31, 2010

Be sure to get your \$40 PSA dues into Marty Ressler, 5272 Holmes Street, Pittsburgh, PA 15201 by January 31, 2010. Don't forget to include a self-addressed stamped envelope (SASE) to get your current PSA membership card. Members receive a 10% discount at Artist and Craftsman with their card. You must be paid up to participate in exhibitions

Dues can be paid online using PayPal through www.pittsburghsocietyofartists.org