

## *Sono-e* by *Simona Němcová*

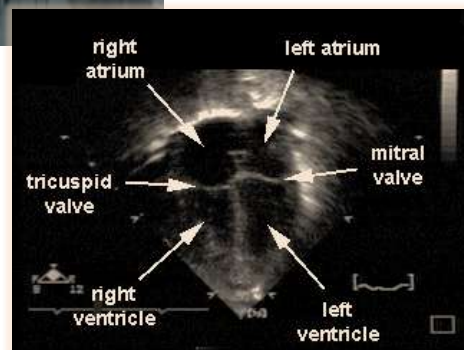
*Member of the Sumi-e Society of America, Ming Chiao Chapter and Pittsburgh Society of Art*

[www.sumi-e.cz](http://www.sumi-e.cz)

Reflecting on our experiences and converting them into a simple ink painting, these are the basics of Sumi-e. This may sound easy, but sometimes simplest things are the most difficult to master.

My inspiration often comes from the medical environment, in particular the vascular sonography. These *'Sono-e'* are professionally realistic paintings, with structures recognizable from the perspective of vascular ultrasound.

Our minds are like a palette. While drawing, we take the memories that left an impression on us and combine them in unusual ways. When I painted floating mountains as seen in the movie *Avatar*, even when using printing, pouring and flat brush technique, the result was still not satisfactory. It was only when I saw the sonography image of the heart, that I got the idea to use the white dots of the Echo image instead of painting waterfalls and clouds. The result was *Sono-e Heart*, featuring four chambers of the heart with trabecular structure of the inner surface and, what one of my fellow artists saw, a soul.





To add other examples of variations in intention and impression, the heart with aorta (**Sono-e Aorta**) was depicted as seed with sprouts. Another painting, with violet back wash over milk spots, created the impression of night mountain landscape with the moon (**Sono-e PVR**). The ink lines represented the PVR (pulse volume recording) waveform patterns from a textbook.

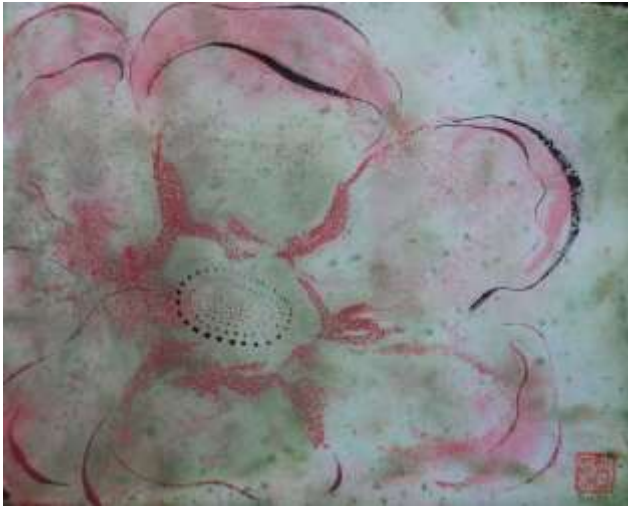


Two other paintings were cut into stripes and assembled in alternating as the skies of day and night. Originally they were Doppler tracing (**Sono-e Doppler**) and liver images (**Sono-e Liver**) arranged as the oscillating waves of ultrasound (**Sono-e**).

Artifact is my favorite commodity; it happens without a specific intention, but its meaning is clear when the mind is ready to see it. The picture of ultrasound liver image **Sono-e Spirit** was painted for a French textbook cover. It was inspired by spiral motif of Maori culture (New Zealand). The contours of the ultrasound image and the picture are identical; they are the result of ink pouring on Hosho paper and red back wash. The additional white features represent the flow of blood in veins and prominent reflections. This creates the image of whitewater with whirlpools under a waterfall.

The Japanese symbol in this painting has a multiple meanings - liver, soul and spirit. Ancient medicine also derived personality traits from the status of the four fluids in the liver. The theory of four temperaments (choleric, melancholic, sanguine and phlegmatic) was described by the Greek physician Hippocrates, and it seems this concept symbolically persists in Japanese language till today.





Most of those paintings could be perceived as unusual or difficult to accept by Sumi-e artists and other audiences. Incidentally, a monoprint in the shape of the Circle of Willis, a vascular structure which is often captured on fetal brain during obstetric ultrasound, can be converted in to a flower. It demonstrates the above described concept of capturing inspiration and converting it into colorful drawing. The symbolism of the flow of blood of an unborn baby in combination with the shape a flower holds a powerful message of creation (***Sono-e Flower of Willis***).

I'm grateful for the inspiration and finding the Sumi-e art at the Edina Art Center Minneapolis, MN. Joining the group of artists of the Ming Chiao Chapter five years ago changed my whole perspective of life and Sumi-e became an integral part of me and my future. Thank you all.

Ming Chiao Chapter will host the Annual National Sumi-e Exhibition 2012 in Minneapolis, MN, USA.



Original of the collage ***Sono-e*** awarded at the Annual Juried Exhibition –Third Virtual Show 2011